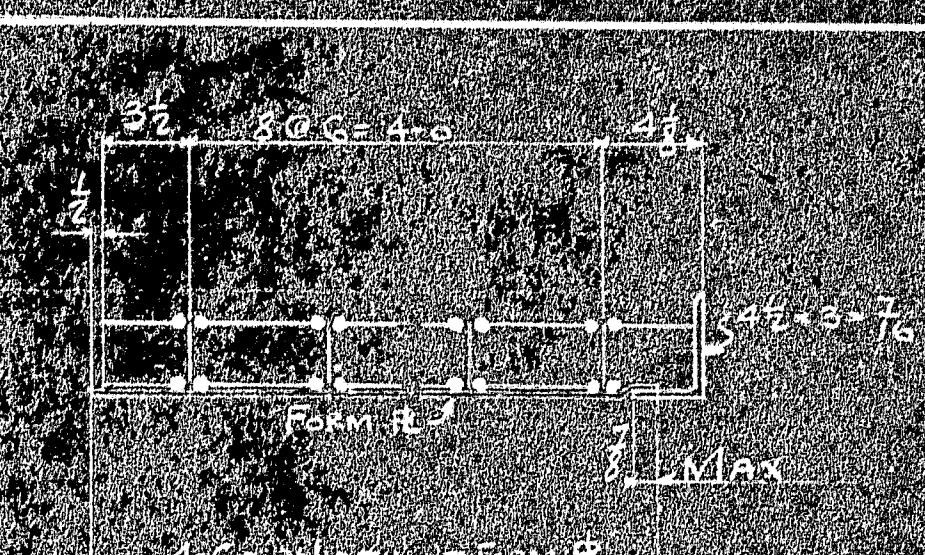
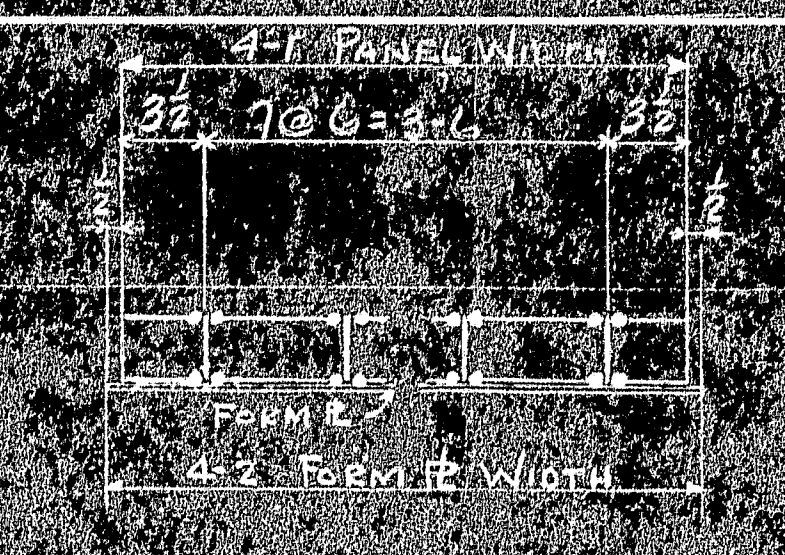
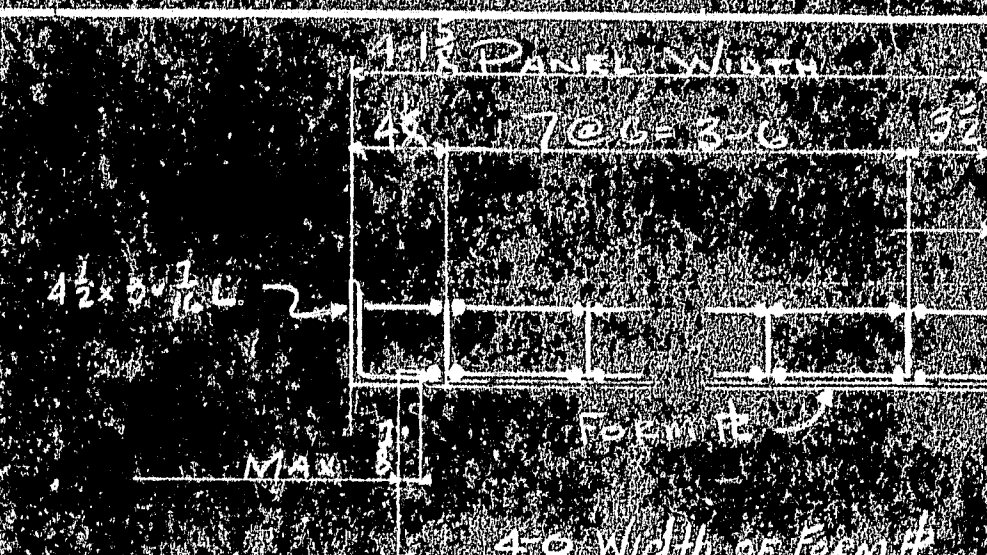


A1R	FP10	FP11	FP12	FP13
A2R	FP14	FP15	FP16	FP17
A3R	FP18	FP19	FP20	FP21
A4R	FP22	FP23	FP24	FP25
A5R	FP26	FP27	FP28	FP29

F1R	FP10	FP11	FP12	FP13
F2R	FP14	FP15	FP16	FP17
F3R	FP18	FP19	FP20	FP21
F4R	FP22	FP23	FP24	FP25
F5R	FP26	FP27	FP28	FP29

D1R	FP10	FP11	FP12	FP13
D2R	FP14	FP15	FP16	FP17
D3R	FP18	FP19	FP20	FP21
D4R	FP22	FP23	FP24	FP25
D5R	FP26	FP27	FP28	FP29



LOCATION OF FORM B1 FOR PANELS  
A1R-A5R F1R-F5R D1R-D5R ETC

LOCATION OF FORM B2 FOR PANELS  
A2R-B2 C2-D2 E2-F2 ETC

LOCATION OF FORM B3 FOR PANELS  
A3R-B3 C3-D3 E3-F3 ETC

3'0"	6'10"	6'10"	6'10"	6'10"	6'10"
26'-10"					

FORM B SPACING FOR PANELS  
MK A1R-A5R F1R-F5R D1R-D5R  
SPACING FOR MK A1R-A5R F1R-F5R D1R-D5R OFF HAND

3'0"	6'10"	6'10"	6'10"	6'10"	6'10"
26'-10"					

FORM B SPACING FOR PANELS MK F1R-F5R D1R-D5R  
SPACING FOR MK F1R-F5R D1R-D5R OFF HAND

3'0"	6'10"	6'10"	6'10"	6'10"	6'10"
26'-10"					

FORM B SPACING FOR PANELS MK D1R-D5R F1R-F5R  
SPACING FOR PANELS D1R-D5R F1R-F5R OFF HAND

B1R	FP10	FP11	FP12	FP13
B2R	FP14	FP15	FP16	FP17
B3R	FP18	FP19	FP20	FP21
B4R	FP22	FP23	FP24	FP25
B5R	FP26	FP27	FP28	FP29

G1R	FP10	FP11	FP12	FP13
G2R	FP14	FP15	FP16	FP17
G3R	FP18	FP19	FP20	FP21
G4R	FP22	FP23	FP24	FP25
G5R	FP26	FP27	FP28	FP29

R1R	FP10	FP11	FP12	FP13
R2R	FP14	FP15	FP16	FP17
R3R	FP18	FP19	FP20	FP21
R4R	FP22	FP23	FP24	FP25
R5R	FP26	FP27	FP28	FP29

3'0"	6'10"	6'10"	6'10"	6'10"	6'10"
26'-10"					

FORM B SPACING FOR PANELS MK B1R-B5R  
SPACING FOR B1R-B5R OFF HAND

3'0"	6'10"	6'10"	6'10"	6'10"	6'10"
26'-10"					

FORM B SPACING FOR PANELS MK G1R-G5R  
SPACING FOR G1R-G5R OFF HAND

3'0"	6'10"	6'10"	6'10"	6'10"	6'10"
26'-10"					

FORM B SPACING FOR PANELS MK R1R-R5R  
SPACING FOR R1R-R5R OFF HAND

C1R	FP10	FP11	FP12	FP13
C2R	FP14	FP15	FP16	FP17
C3R	FP18	FP19	FP20	FP21
C4R	FP22	FP23	FP24	FP25
C5R	FP26	FP27	FP28	FP29

J1R	FP10	FP11	FP12	FP13
J2R	FP14	FP15	FP16	FP17
J3R	FP18	FP19	FP20	FP21
J4R	FP22	FP23	FP24	FP25
J5R	FP26	FP27	FP28	FP29

M1R	FP10	FP11	FP12	FP13
M2R	FP14	FP15	FP16	FP17
M3R	FP18	FP19	FP20	FP21
M4R	FP22	FP23	FP24	FP25
M5R	FP26	FP27	FP28	FP29

3'0"	6'10"	6'10"	6'10"	6'10"	6'10"
26'-10"					

FORM B SPACING FOR PANELS MK C1R-C5R  
SPACING FOR C1R-C5R OFF HAND

3'0"	6'10"	6'10"	6'10"	6'10"	6'10"
26'-10"					

FORM B SPACING FOR PANELS MK J1R-J5R  
SPACING FOR J1R-J5R OFF HAND

3'0"	6'10"	6'10"	6'10"	6'10"	6'10"
26'-10"					

FORM B SPACING FOR PANELS MK M1R-M5R  
SPACING FOR M1R-M5R OFF HAND

D1R	FP10	FP11	FP12	FP13
D2R	FP14	FP15	FP16	FP17
D3R	FP18	FP19	FP20	FP21
D4R	FP22	FP23	FP24	FP25
D5R	FP26	FP27	FP28	FP29

H1R	FP10	FP11	FP12	FP13
H2R	FP14	FP15	FP16	FP17
H3R	FP18	FP19	FP20	FP21
H4R	FP22	FP23	FP24	FP25
H5R	FP26	FP27	FP28	FP29

S1R	FP10	FP11	FP12	FP13
S2R	FP14	FP15	FP16	FP17
S3R	FP18	FP19	FP20	FP21
S4R	FP22	FP23	FP24	FP25
S5R	FP26	FP27	FP28	FP29

3'0"	6'10"	6'10"	6'10"	6'10"	6'10"
26'-10"					

FORM B SPACING FOR PANELS MK D1R-D5R  
SPACING FOR D1R-D5R OFF HAND

3'0"	6'10"	6'10"	6'10"	6'10"	6'10"
26'-10"					

FORM B SPACING FOR PANELS MK H1R-H5R  
SPACING FOR H1R-H5R OFF HAND

3'0"	6'10"	6'10"	6'10"	6'10"	6'10"
26'-10"					

FORM B SPACING FOR PANELS MK S1R-S5R  
SPACING FOR S1R-S5R OFF HAND

E1R	FP10	FP11	FP12	FP13
E2R	FP14	FP15	FP16	FP17
E3R	FP18	FP19	FP20	FP21
E4R	FP22	FP23	FP24	FP25
E5R	FP26	FP27	FP28	FP29

K1R	FP10	FP11	FP12	FP13
K2R	FP14	FP15	FP16	FP17
K3R	FP18	FP19	FP20	FP21
K4R	FP22	FP23	FP24	FP25
K5R	FP26	FP27	FP28	FP29

T1R	FP10	FP11	FP12	FP13
T2R	FP14	FP15	FP16	FP17
T3R	FP18	FP19	FP20	FP21
T4R	FP22	FP23	FP24	FP25
T5R	FP26	FP27	FP28	FP29

3'0"	6'10"	6'10"	6'10"	6'10"	6'10"
26'-10"					

FORM B SPACING FOR PANELS MK E1R-E5R  
SPACING FOR E1R-E5R OFF HAND

3'0"	6'10"	6'10"	6'10"	6'10"	6'10"
26'-10"					

FORM B SPACING FOR PANELS MK K1R-K5R  
SPACING FOR K1R-K5R OFF HAND

3'0"	6'10"	6'10"	6'10"	6'10"	6'10"
26'-10"					

FORM B SPACING FOR PANELS MK T1R-T5R  
SPACING FOR T1R-T5R OFF HAND

CUSTOMER		RELIANCE STEEL PRODUCTS COMPANY	
THE PHOENIX BRIDGE CO. PHOENIXVILLE PA		RANKIN, (CHITTOUGH DISTRICT) PA BRIDGE DEPARTMENT	
PROJECT		PWA PROJECT ME1010	
LOCATION		DEER LICK, SEVEN MILES BRIDGE, HANCOCK CO. MARYLAND	
CUSTOMER ORDER NO.	REFERENCE	DRAWN	APPROVED BY
		L.M. 7-8-58	
CHECKED	DATE	3001-3	3001-3
TRACED			

